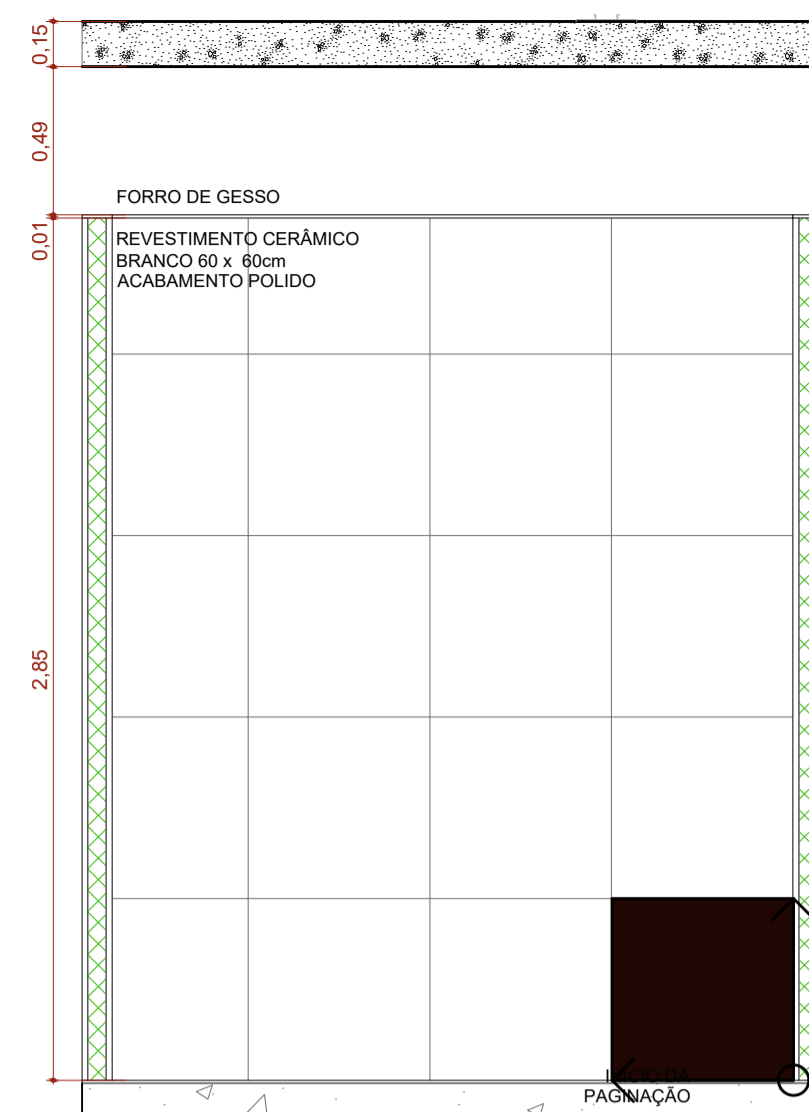


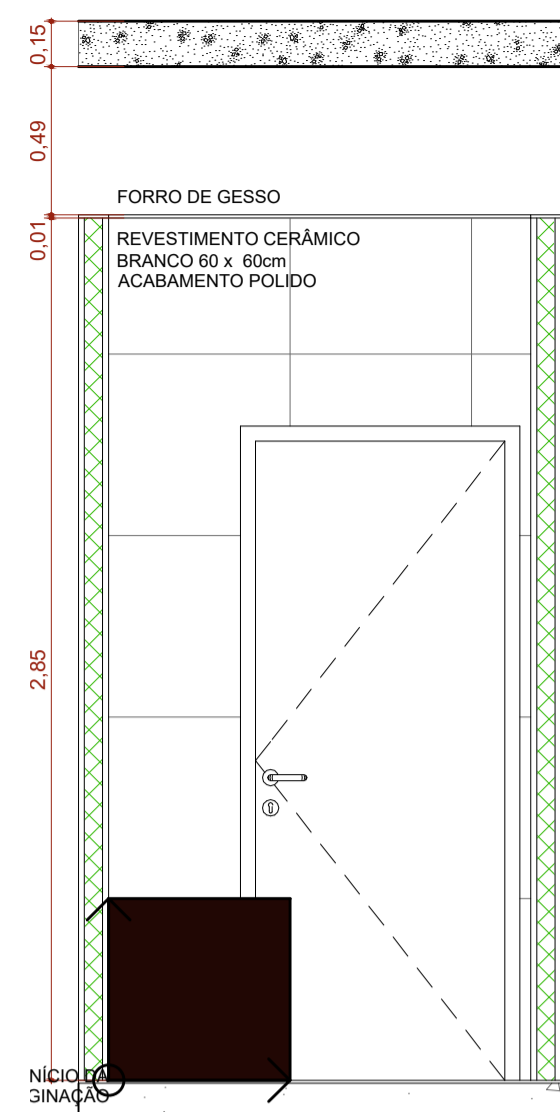
A.M.7 DML

Escala:1:25



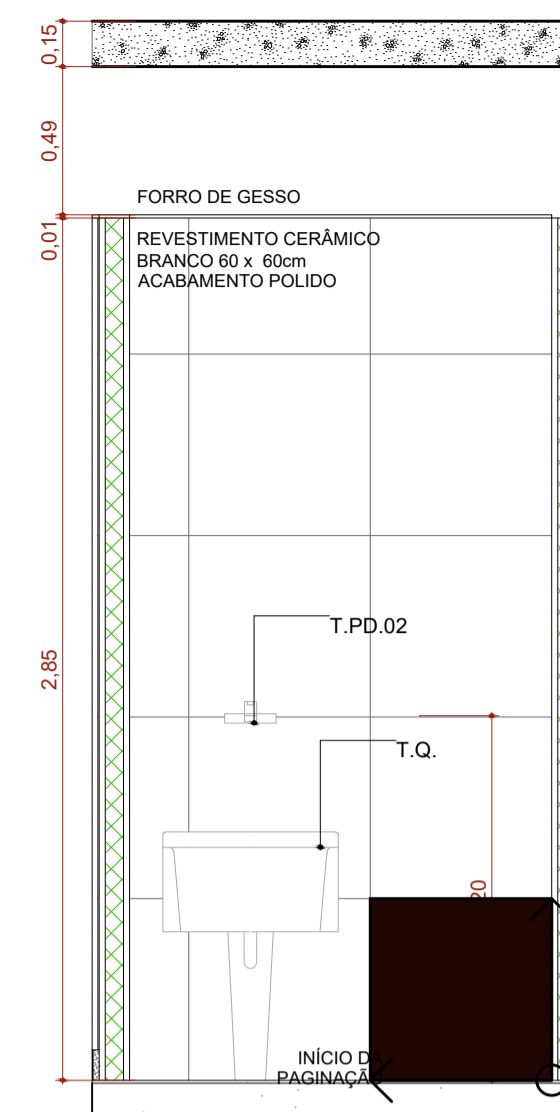
A.M.07 VISTA 1

Escala:1:25



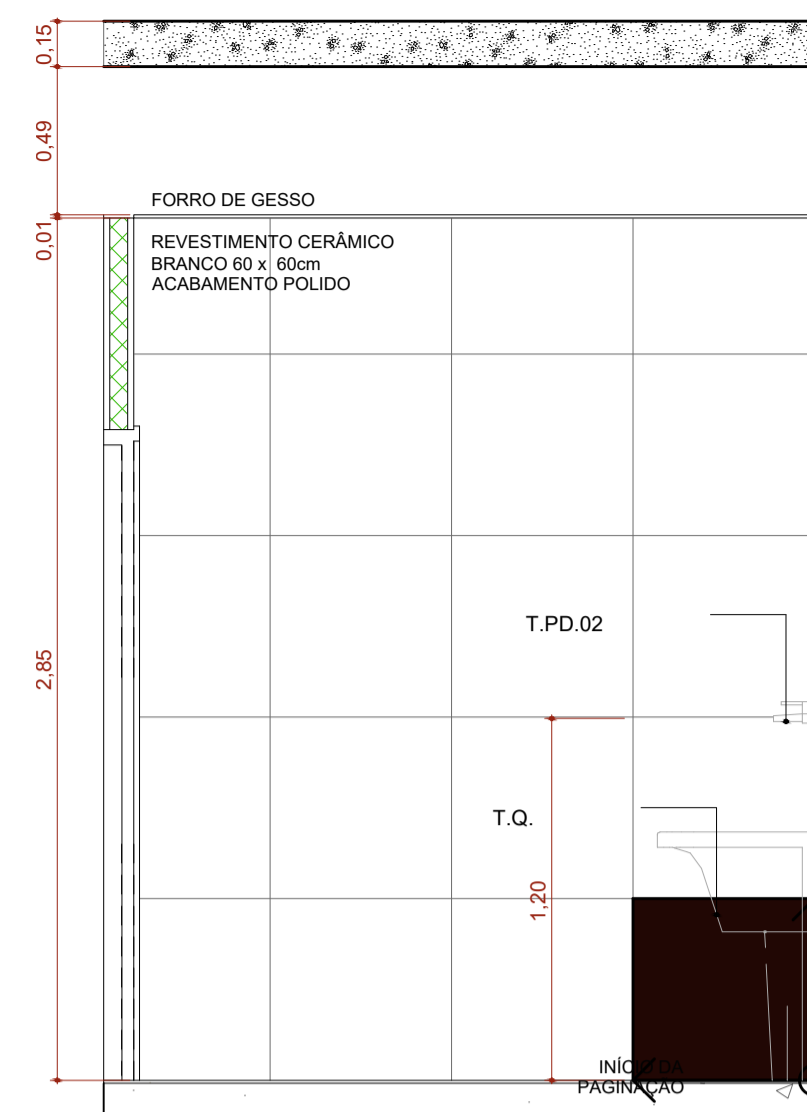
A.M.07 VISTA 2

Escala:1:25



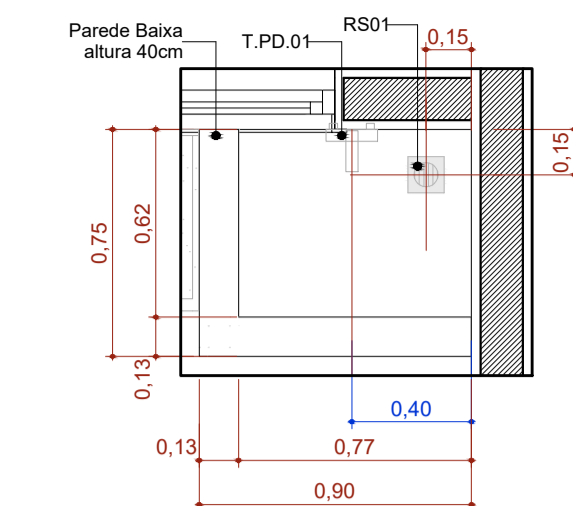
A.M.07 VISTA 3

Escala:1:25



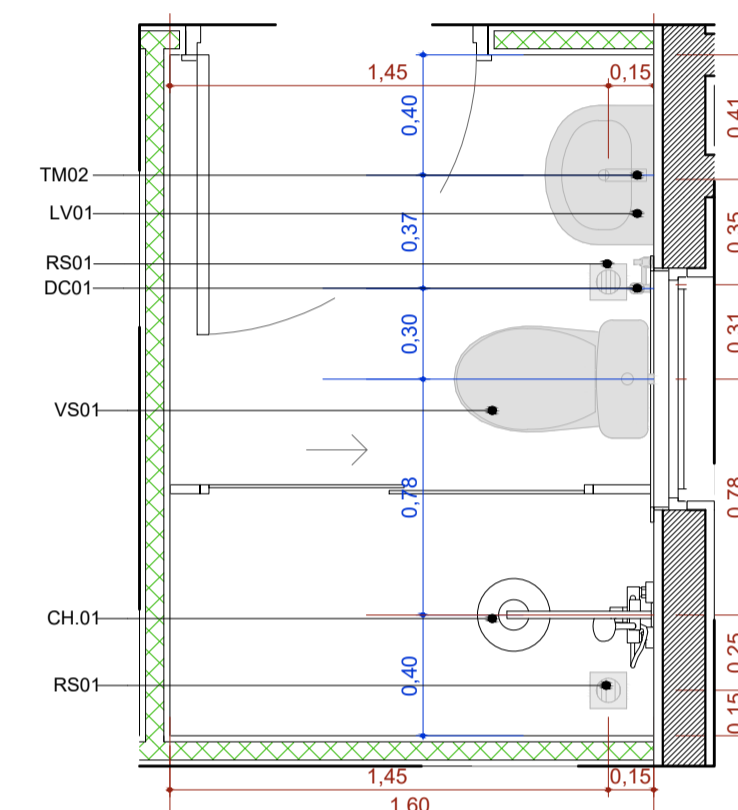
A.M.07 VISTA 4

Escala:1:25



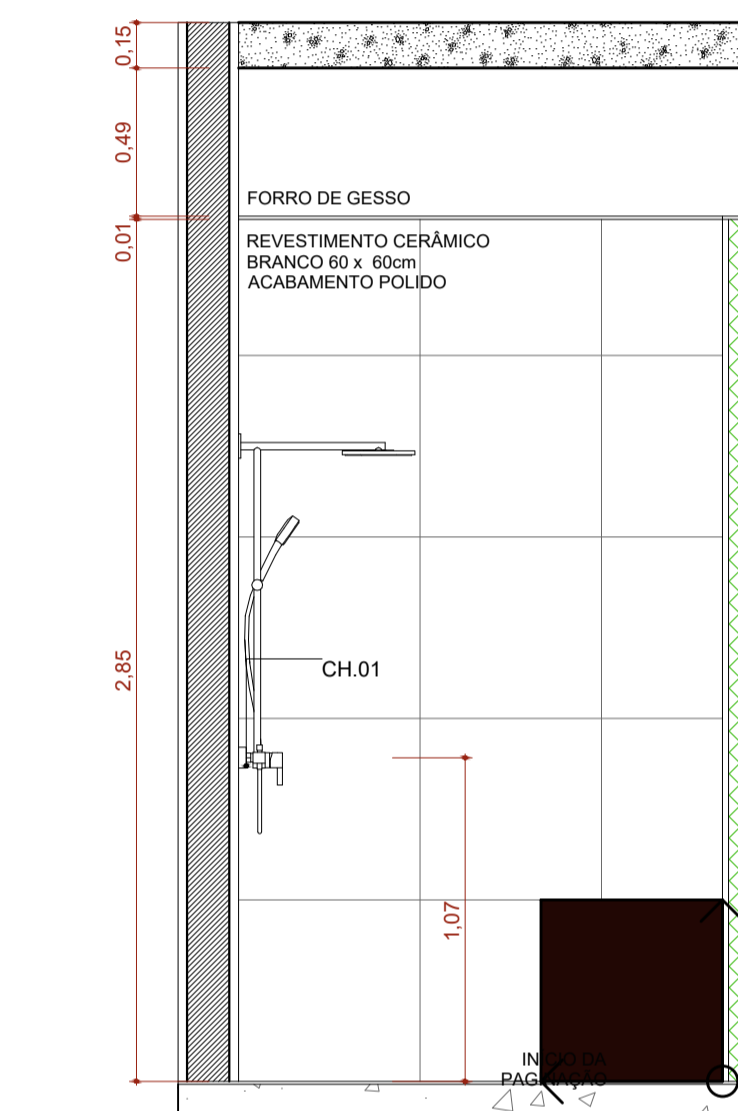
A.M.10 Higienização dos pés

Escala:1:25



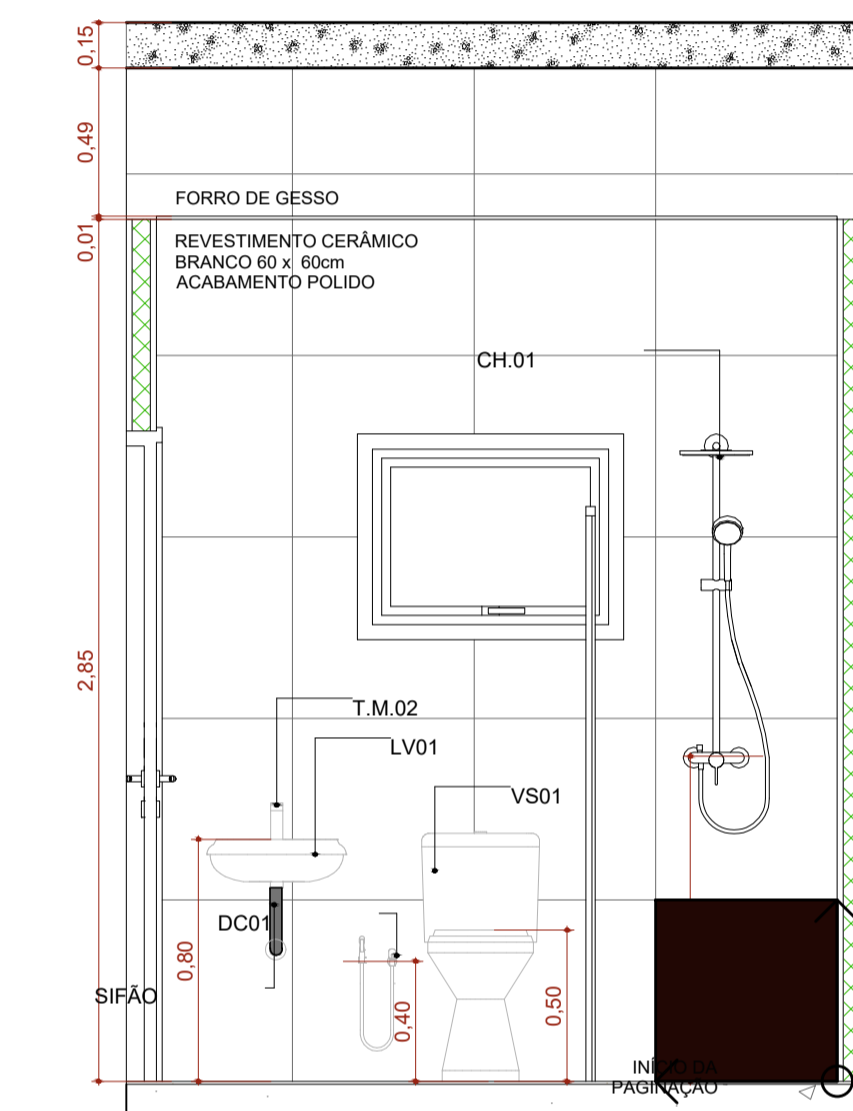
A.M.8 Banh. Func. Masc.

Escala:1:25



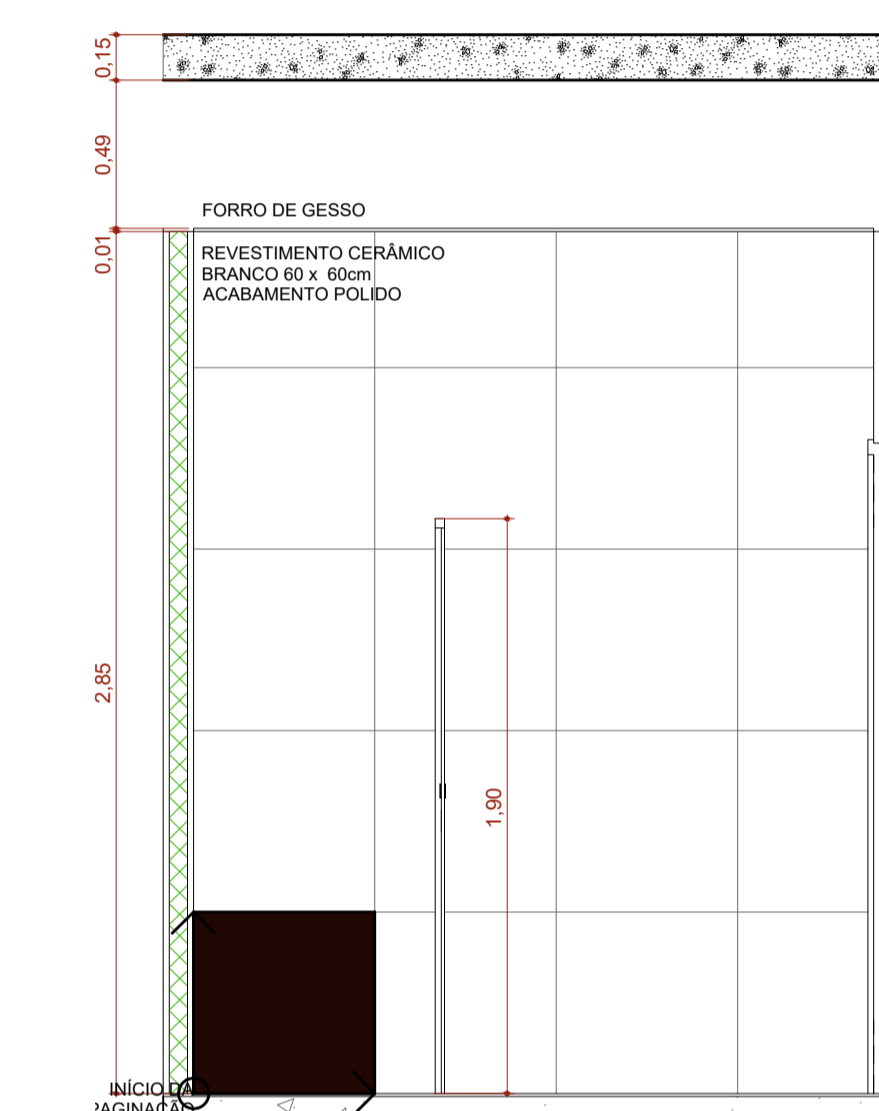
A.M.08 VISTA 1

Escala:1:25



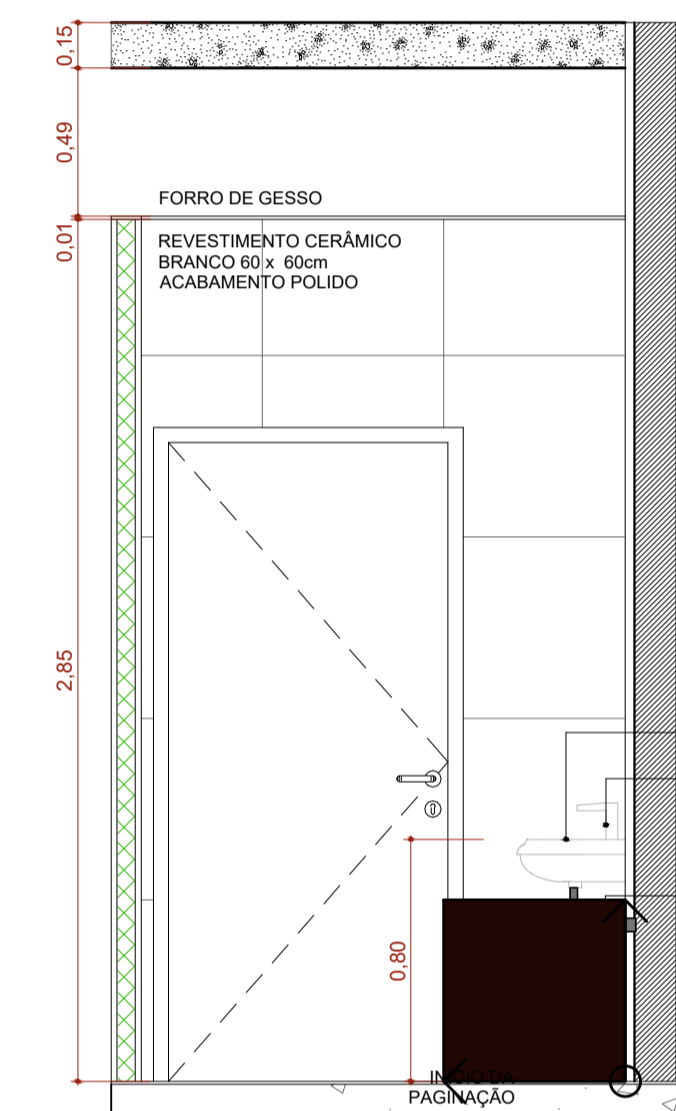
A.M.08 VISTA 2

Escala:1:25



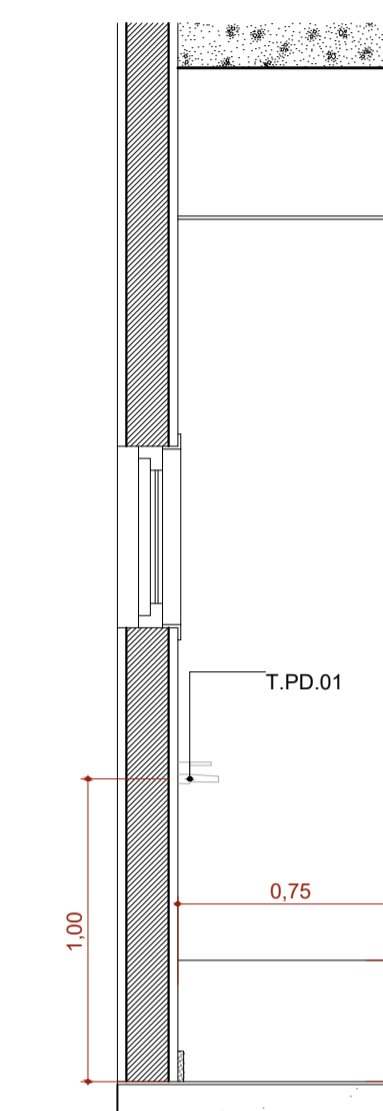
A.M.08 VISTA 3

Escala:1:25



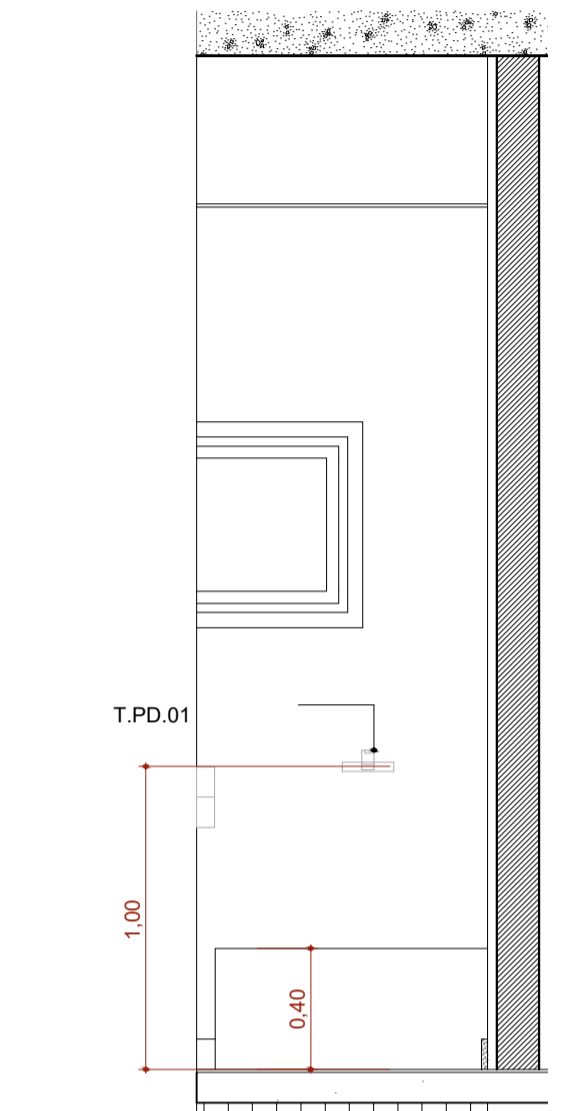
A.M.08 VISTA 4

Escala:1:25



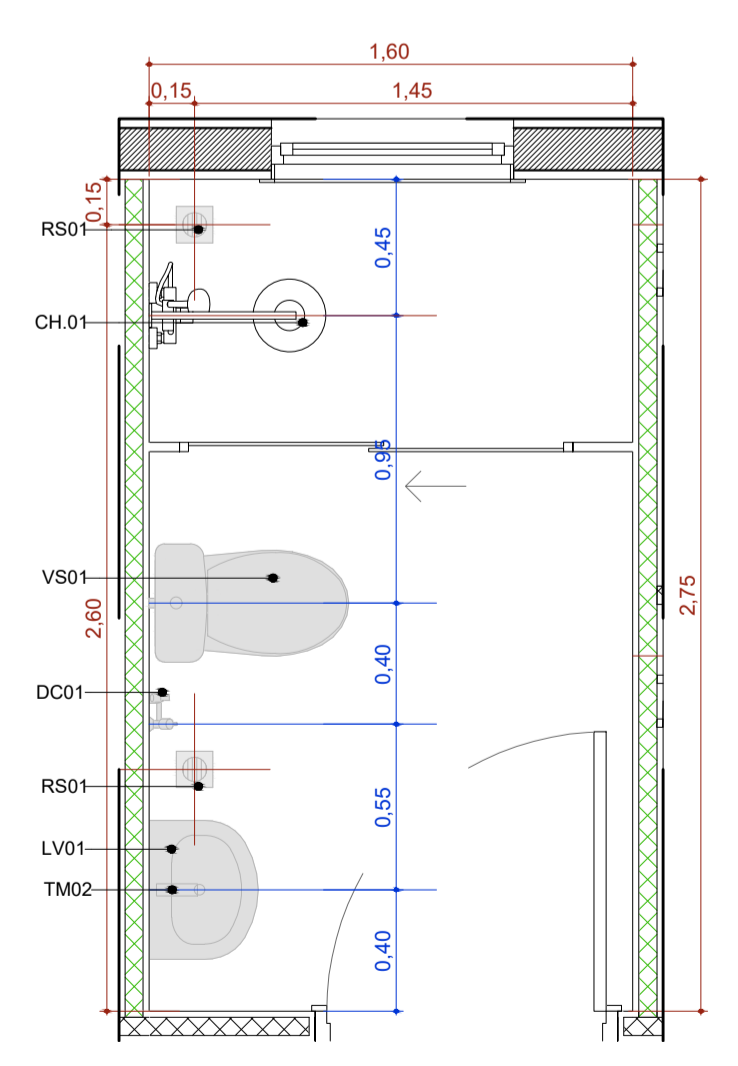
A.M.10 VISTA 1

Escala:1:25



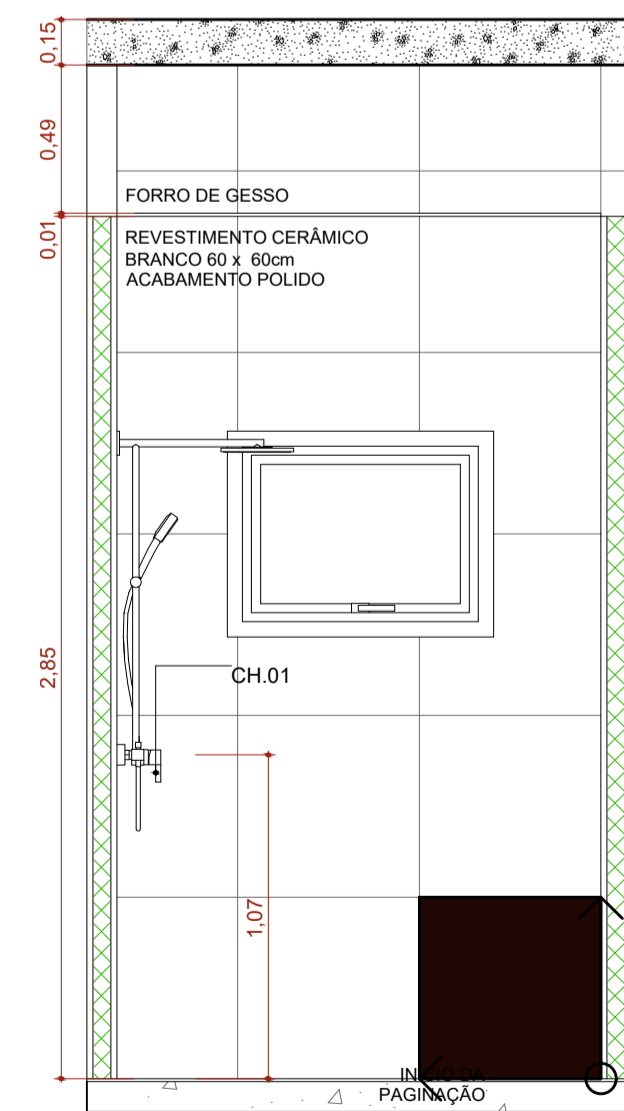
A.M.10 VISTA 2

Escala:1:25



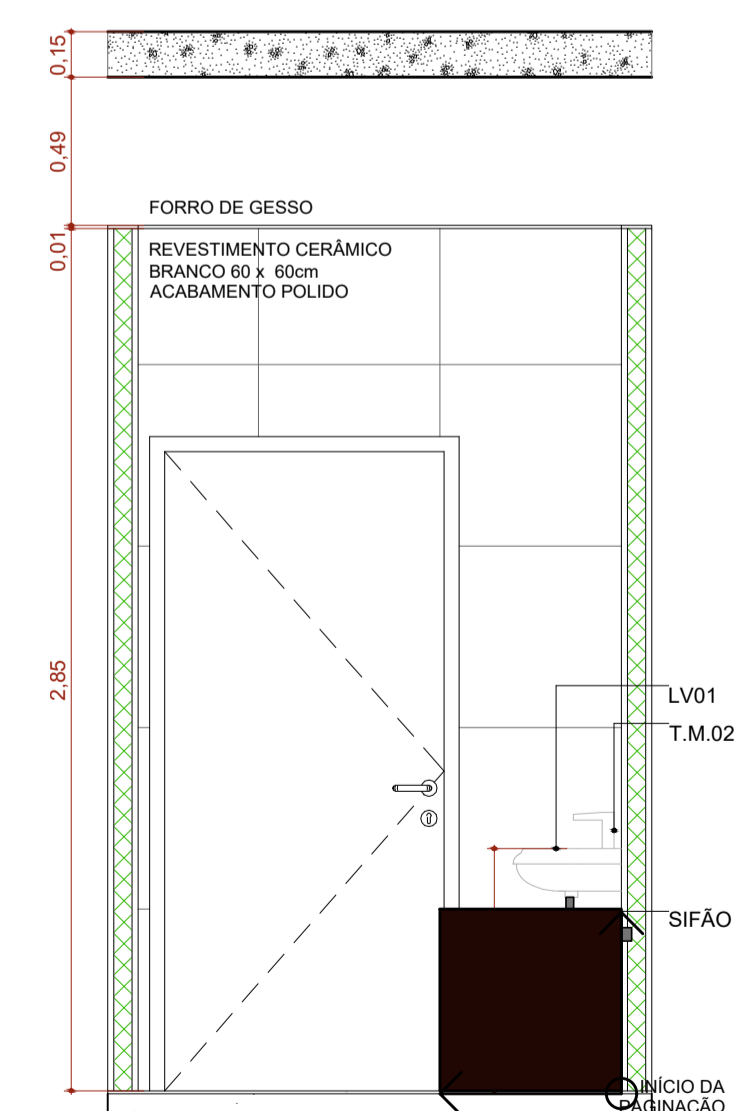
A.M.9 Banh. Func. Fem.

Escala:1:25



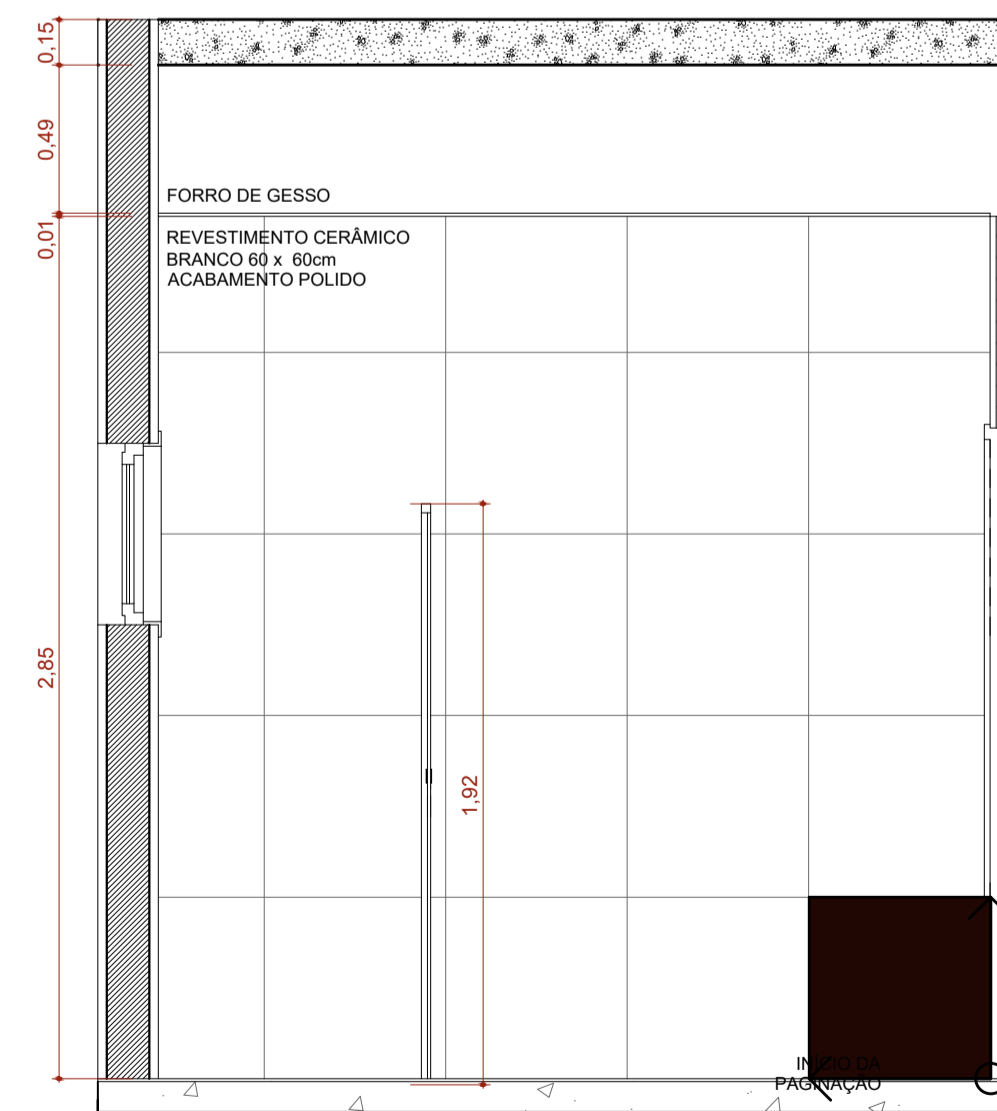
A.M.09 VISTA 1

Escala:1:25



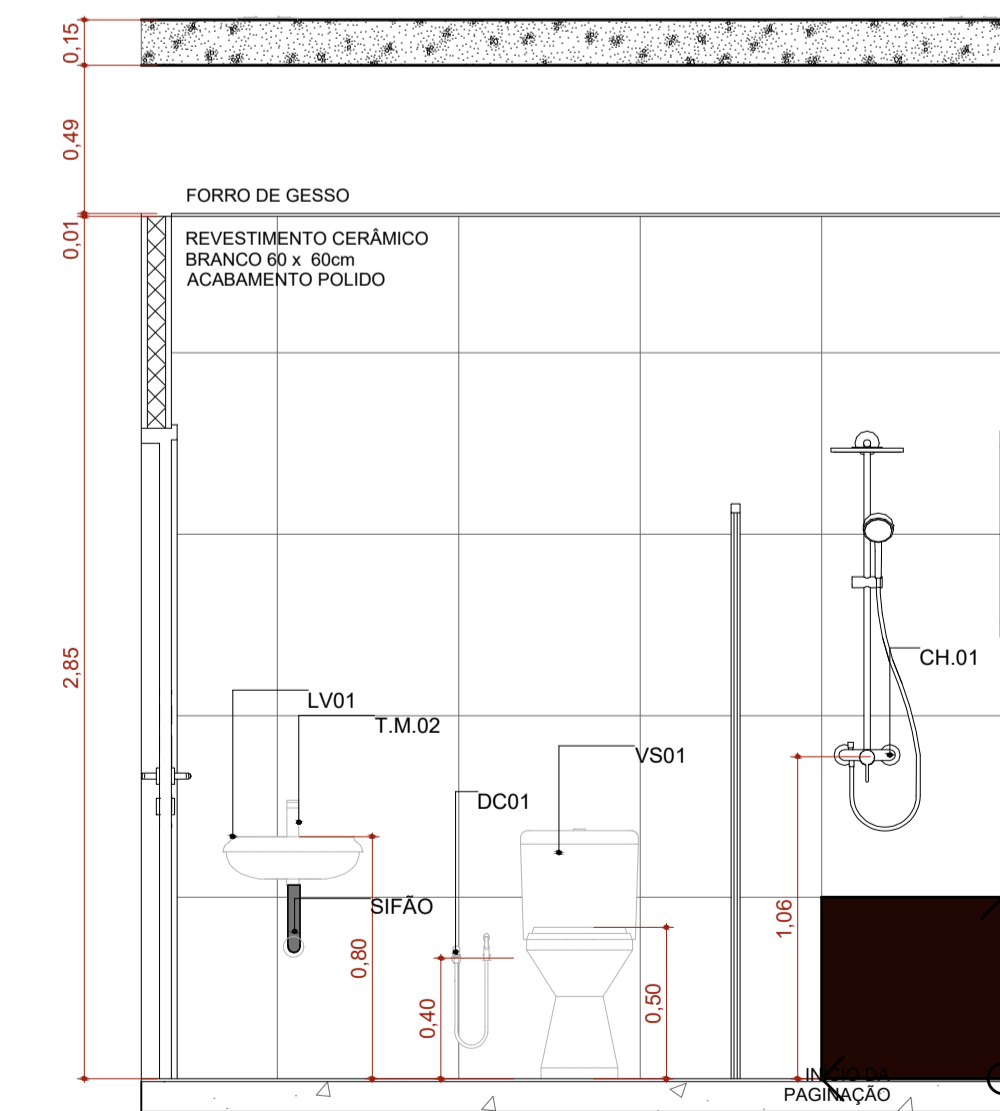
A.M.09 VISTA 2

Escala:1:25



A.M.09 VISTA 3

Escala:1:25



A.M.09 VISTA 4

Escala:1:25

PLANTA-CHAVE DE SITUAÇÃO

AUTORIA DO PROJETO LICITADO
DAFNE CARDOSO TEIXEIRA
CREA-MG: 54.246/D

REGISTRO
MG20264657977

REVISÃO	DATA	EMISSÃO INICIAL	DESCRIÇÃO
R0	31/12/2025		

TÍTULO DO PROJETO
**UNIDADE BÁSICA DE SAÚDE SANTANA DE MINAS
UBS PORTE 1**

PROPRIETÁRIO
PREFEITURA MUNICIPAL DE SÃO FRANCISCO/MG
SECRETARIA MUNICIPAL DE SAÚDE

CNPJ
22.679.153/0001-40
ENDEREÇO
Secretaria Municipal de Saúde
Avenida Brasiliano Braz, Nº.: 515, Centro, São Francisco-MG
CEP 39.300-000 - São Francisco - Minas Gerais



DISCIPLINA
ARQUITETURA
PRANCHA
12/12

TÍTULO DA PRANCHA
DETALHAMENTO ÁREAS MOLHADAS 02

DESCRIÇÃO DA ETAPA

PROJETO EXECUTIVO

NOME: PRANCHA - ARQUIVO	REVISÃO	UNIDADE	DATA	ESCALA
UNIDADE BÁSICA DE SAÚDE SANTANA DE MINAS UBS PORTE 1	R0	METROS	31/12/2025	INDICADA

AUTORIA INTELECTUAL
MIRELA PILON PESSATTI
CAU-SP: A 25669-2

REGISTRO
ART/RRT: 14590109

DIREITOS AUTORAIS RESERVADOR CONFORME LEGISLAÇÃO NACIONAL E INTERNACIONAL

FOLHA A1
84,10 x 58,40