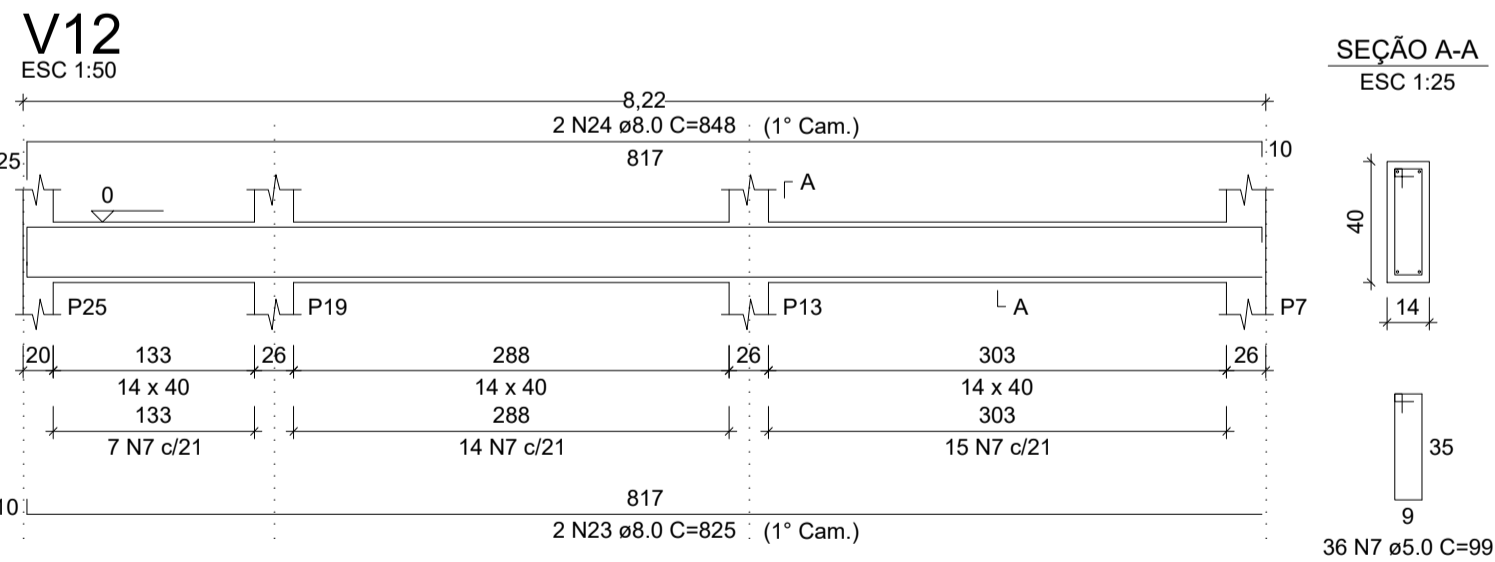
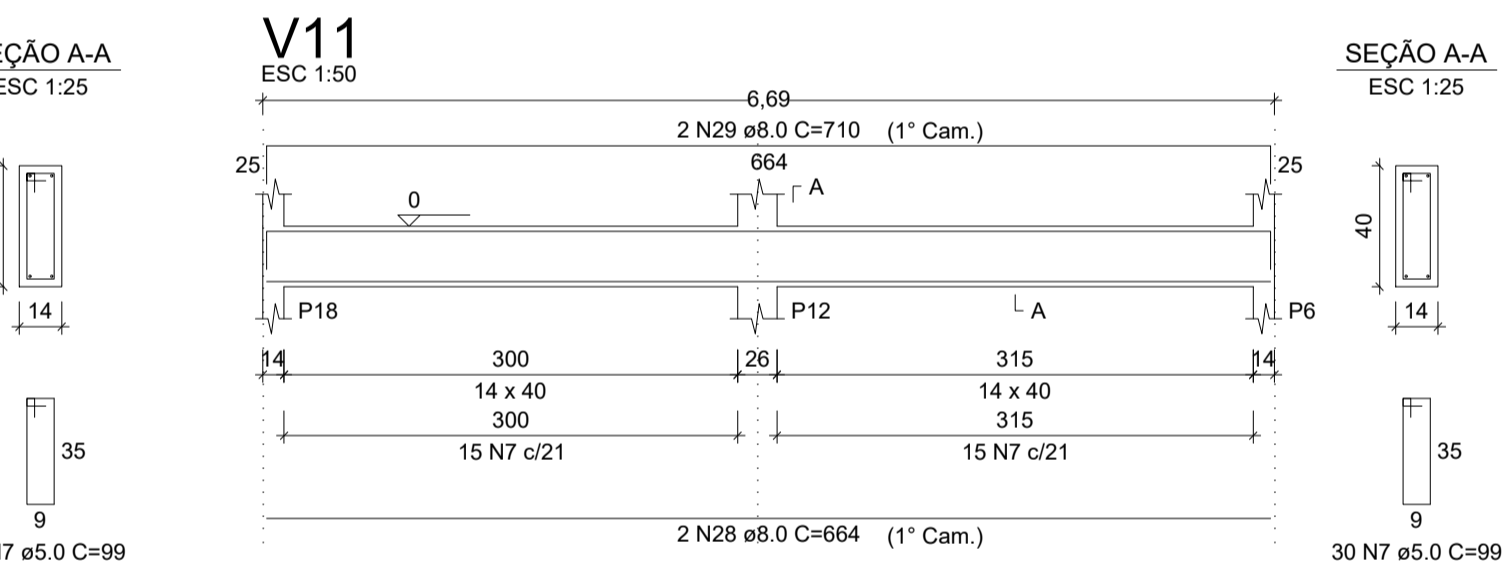
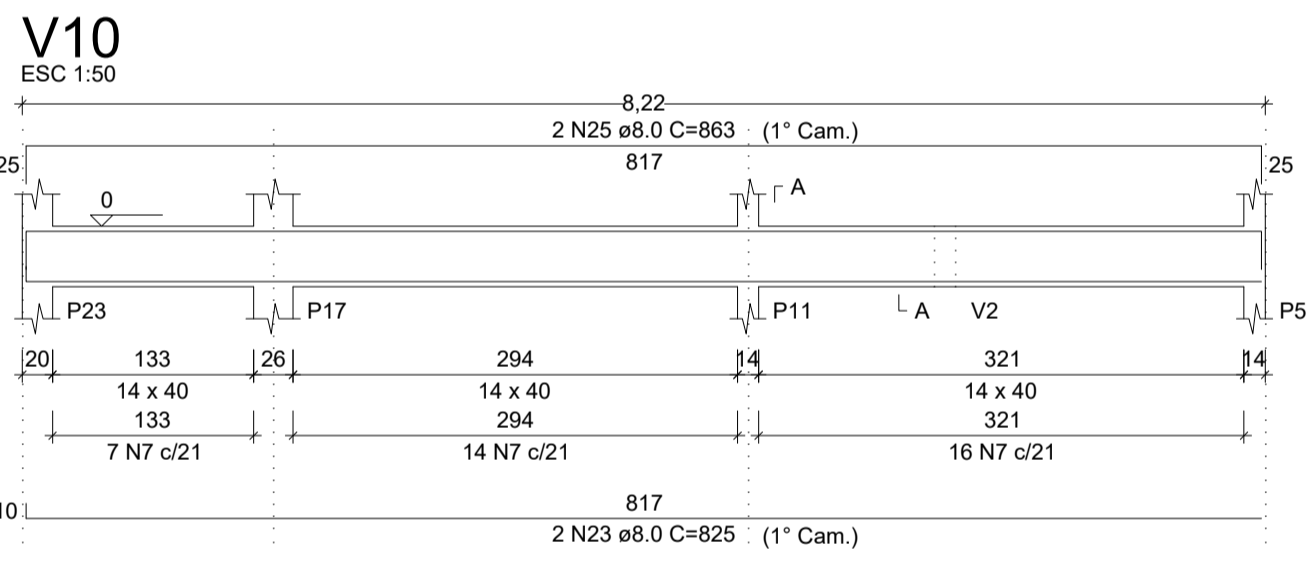
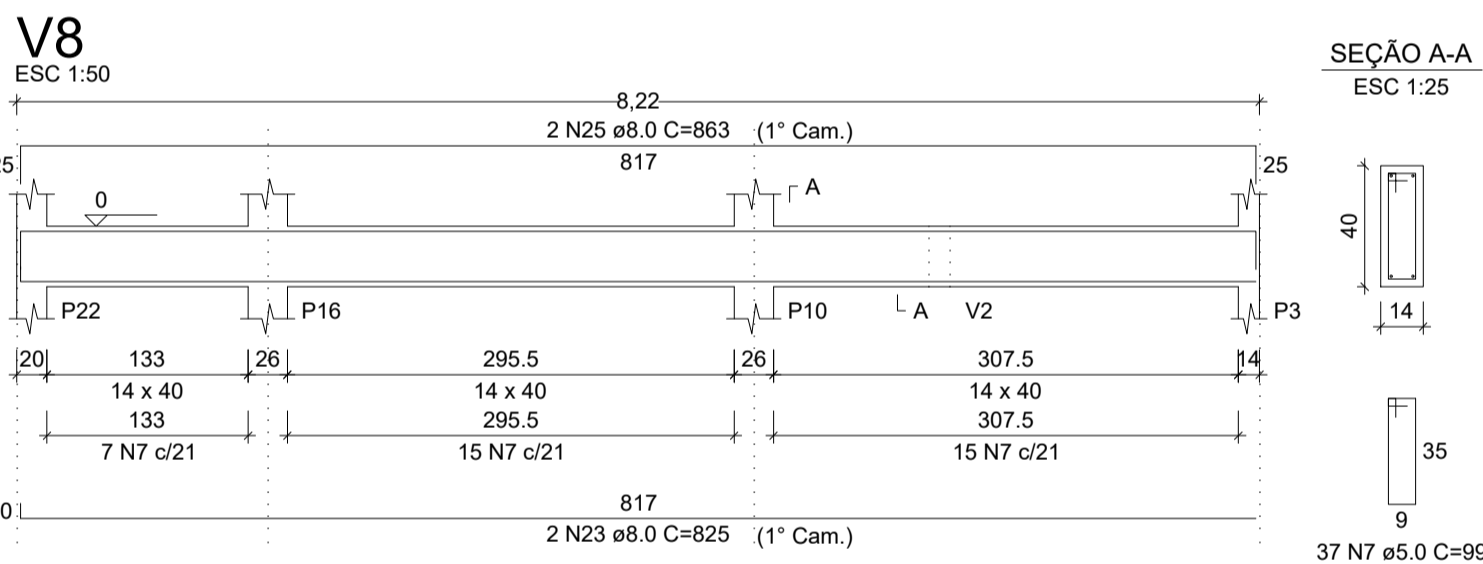
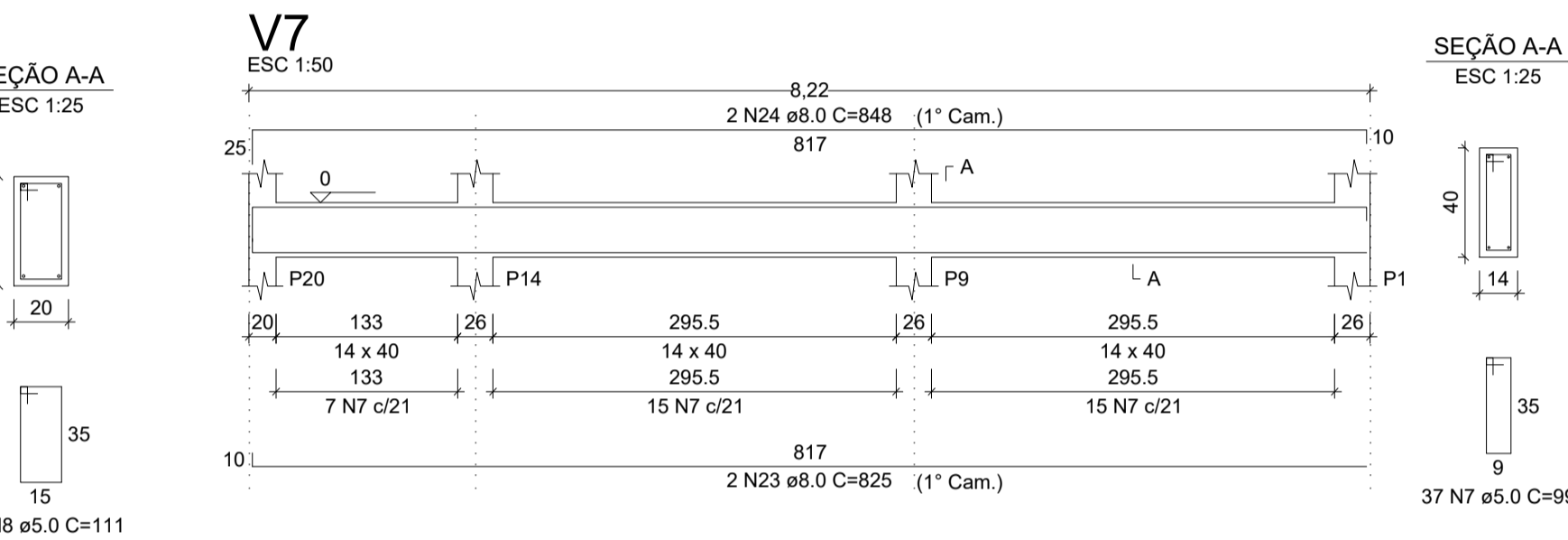
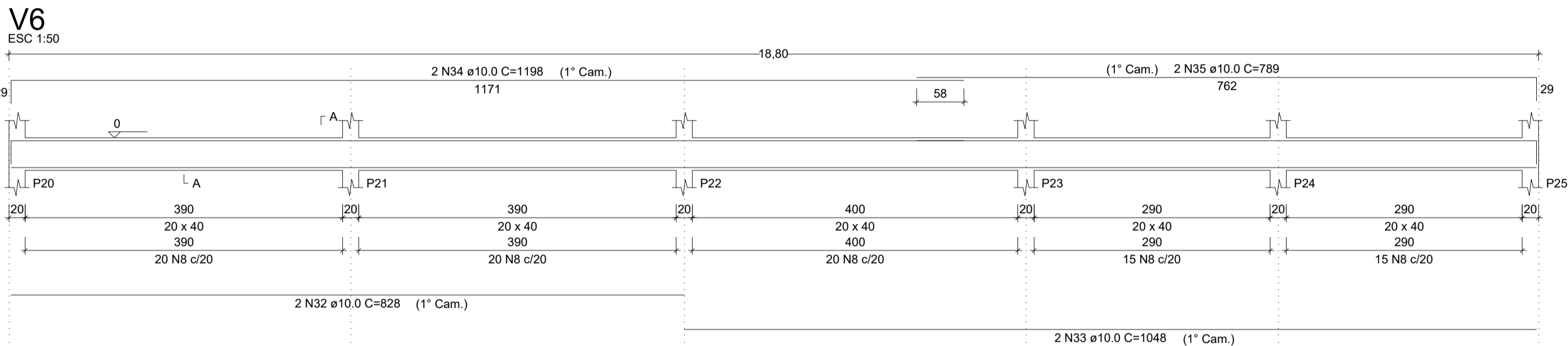
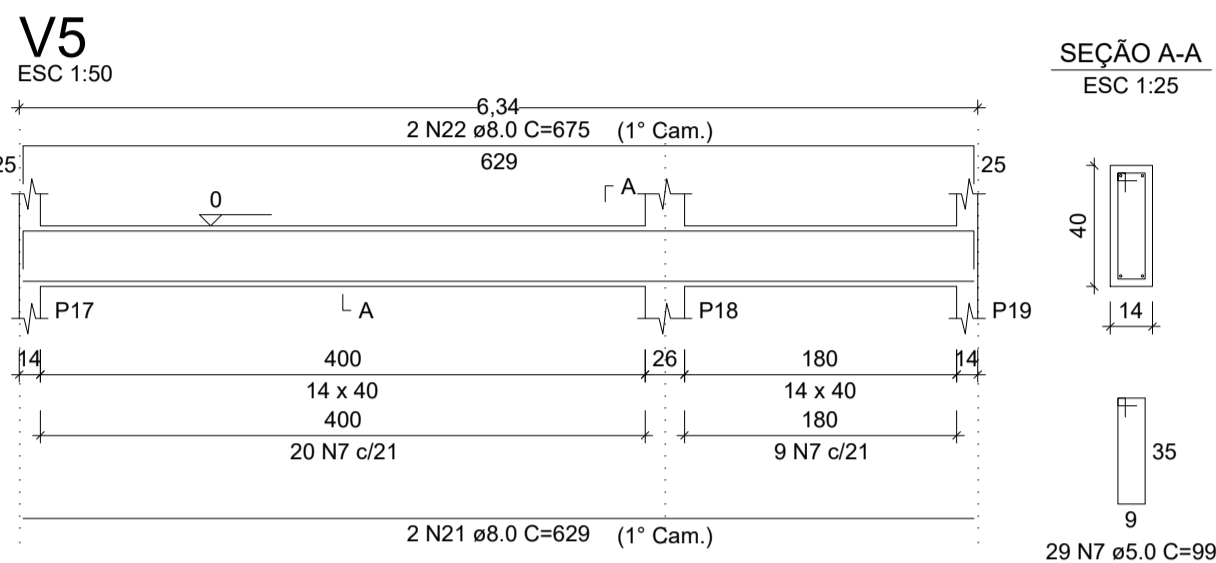
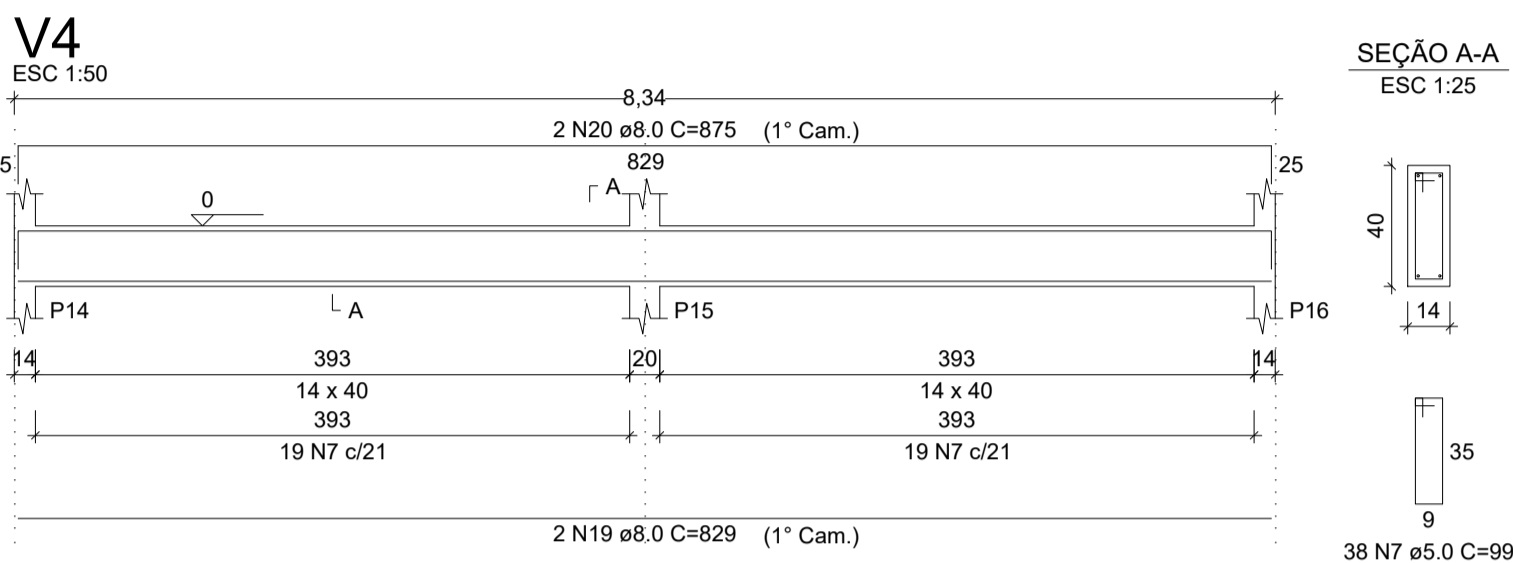
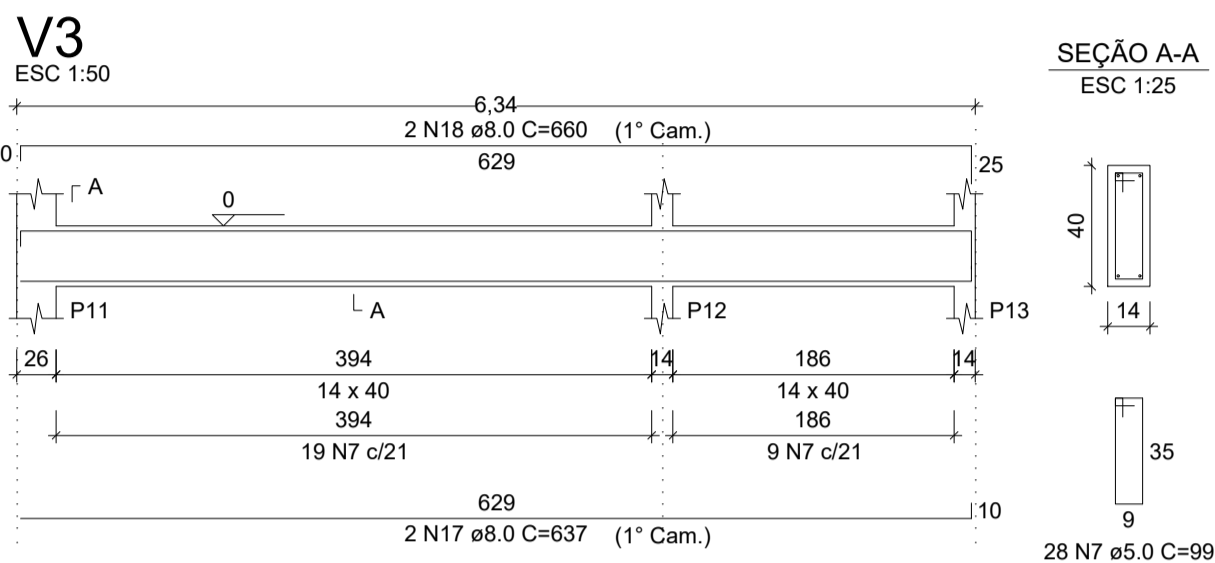


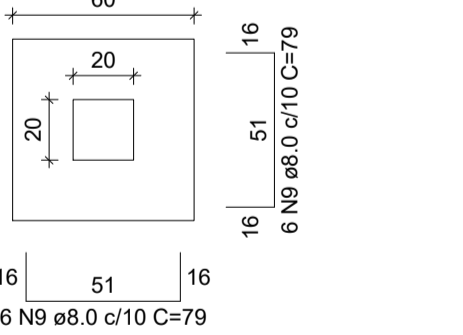
RELAÇÃO DO AÇO - PAV. FUNDAÇÃO					
AÇO	N	DIAM (mm)	QUANT	C.UNIT (cm)	C.TOTAL (cm)
CA60	1	5.0	85	71	6035
	2	5.0	136	51	6936
	3	5.0	10	101	1010
	4	5.0	16	72	1152
	5	5.0	30	71	2130
	6	5.0	48	57	2736
	7	5.0	386	99	38214
	8	5.0	90	111	9990
	9	8.0	186	79	14694
	10	8.0	114	94	10716
	11	8.0	2	1032	2064
CA50	12	8.0	2	832	1664
	13	8.0	2	1198	2396
	14	8.0	2	768	1536
	15	8.0	2	429	858
	16	8.0	2	495	990
	17	8.0	2	637	1274
	18	8.0	2	660	1320
	19	8.0	2	829	1658
	20	8.0	2	875	1750
	21	8.0	2	629	1258
	22	8.0	2	675	1350
	23	8.0	8	825	6600
	24	8.0	4	848	3392
	25	8.0	4	863	3452
	26	8.0	2	214	428
	27	8.0	2	260	520
	28	8.0	2	664	1328
	29	8.0	2	710	1420
	30	10.0	100	152	15200
	31	10.0	8	75	600
	32	10.0	2	828	1656
	33	10.0	2	1048	2096
	34	10.0	2	1198	2396
	35	10.0	2	789	1578



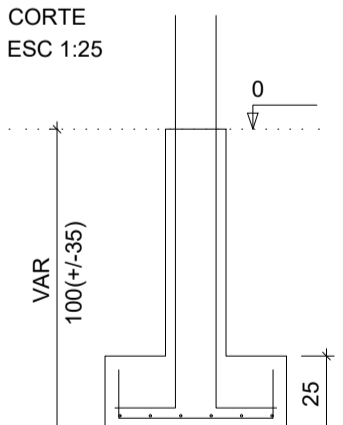
S20=S21=S22=S23=S24=S25

PLANTA

ESC 1:25



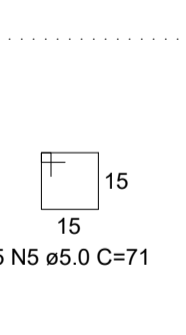
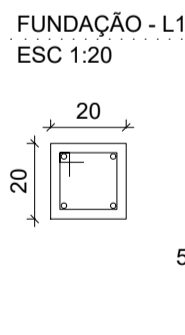
Solo com capacidade de suporte > 3.00 kgf/cm²
Solo compactado sobre a sapata
peso especifico > 1200.00 kgf/m³



P20=P21=P22=P23=P24=P25

FUNDAÇÃO - L1

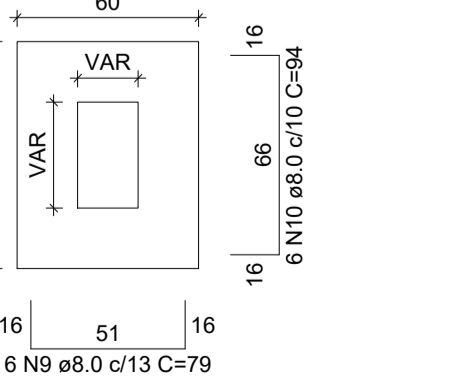
ESC 1:20



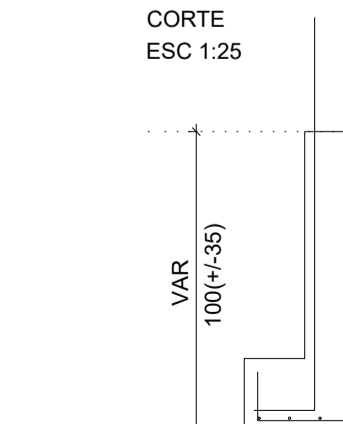
S1=S2=S3=S4=S5=S6=S7=S8=S9=S10=S11=S12
=S13=S14=S15=S16=S17=S18=S19

PLANTA

ESC 1:25



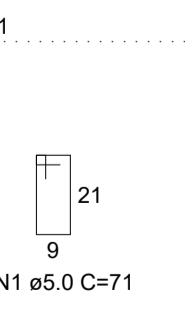
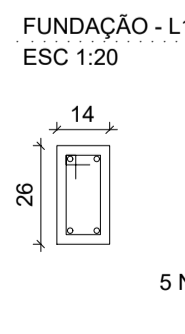
Solo com capacidade de suporte > 3.00 kgf/cm²
Solo compactado sobre a sapata
peso especifico > 1200.00 kgf/m³



P1=P3=P4=P5=P6=P7=P8=P9=P10=P11=P12=P13=
=P14=P16=P17=P18=P19

FUNDAÇÃO - L1

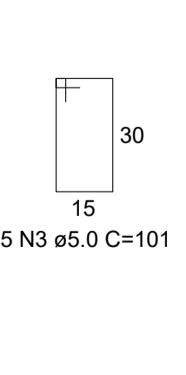
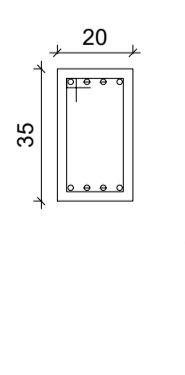
ESC 1:20



P2=P15

FUNDAÇÃO - L1

ESC 1:20



CEMEI NOSSA SENHORA APARECIDA

COMUNIDADE ANGICAL

PROJETO ESTRUTURAL

CONSTRUÇÃO DE ESCOLA MUNICIPAL - 1ª SALA

DATA	BAIRRO	COMUNIDADE	CIDADE	ESTADO
FEVEREIRO/2023	ZONA RURAL	ANGICAL	SÃO FRANCISCO	MG

SECRETARIA MUNICIPAL DE EDUCAÇÃO
PREFEITURA MUNICIPAL DE SÃO FRANCISCO - MG
CNPJ: 22.679.153/0001-40

EXECUÇÃO:
EMPRESA:
CNPJ:

ENGENHEIRO PROJETISTA:
SARAH MENDES CARDOSO
CREA:220767/D

RESPONSÁVEL TÉCNICO:
ENG.º:
CREA:
ART:MG20231839547

CONTEÚDO:
(01 - VIGAS (PAVIMENTO FUNDAÇÃO))
(02 - PILARES (PAVIMENTO FUNDAÇÃO))
(03 - RELAÇÃO DO AÇO (PAVIMENTO FUNDAÇÃO))
(04 - RESUMO DO AÇO (PAVIMENTO FUNDAÇÃO))

AUTENTICAÇÕES:

Secretaria Municipal de Educação
E-mail: semed@prefeituraesaofrancisco.mg.gov.br
Endereço: Rua Ferreira Leite, nº 276, Centro
Telefone: (35)3631-3576
São Francisco - MG

CONTEÚDO	ESCALA	FOLHA
INDICADO	INDICADA	01/08